



GOLD ROOM EQUIPMENT

Ansac has manufactured thermal equipment for gold mining processes for over 30 years. Such experience in the sector means that Ansac has unparalleled designs for any thermal requirements that are needed in a gold mine.

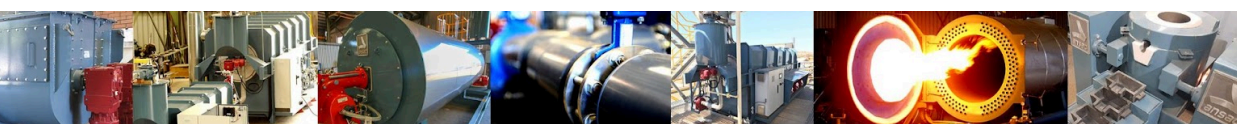
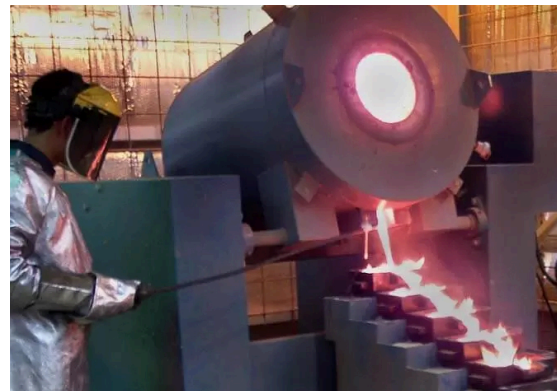
The remote and unforgiving nature of gold mines across the globe mean that process equipment needs to be sturdy, robust and require minimal maintenance, Ansac have adopted this philosophy into the design and manufacture of all of its thermal processing equipment.

TILTING FURNACE

The TA series tilting furnace provides a flexible and robust smelting solution for mining operations of almost any size. Designed to operate effectively in the harshest of environments and developed with over a quarter of a century of industry experience, the TA Series Furnace is potentially the most efficient and operable smelting solution available to the gold room.

The furnaces range in size from an A100 to an A1000 crucible size with an electro-mechanical tilting process that utilises a chain drive to control the tilt. The spout experiences minimal movement during the tilt, further increasing user control and allowing for safe and efficient operation in a completely self-contained and compact unit. In addition to increasing pour control and site safety, the efficient electro-mechanical tilt will also help to reduce labour costs and gold losses.

The construction features a removable pouring spout which not only provides a smooth and efficient pour, but allows the gold room operators to replace the component that experiences the most distress during the pouring process at minimal cost. The furnaces are supplied with a cascade style pouring table which allows the pouring of gold bullions into 500, 600, 800 or 1000 oz moulds. The TA furnace can be heated through both diesel and gas means and operate between 1100 and 1300 °C.



The flexibility of Ansac's thermal processing equipment is key to the businesses success; the TA series is no exception in this case and has been effectively deployed into other mineral sectors including platinum, silver and aluminium smelting.

MODEL FURNACE	TA100	TA200	TA300	TA400	TA500	TA1000
Silicon Carbide Crucible size	A100	A200	A300	A400	A500	A1000
Capacity (kg brass / L)	120 / 16.4	239 / 28	323 / 48.6	479 / 64	531 / 81.9	1069 / 142
Cascade Stand	4 tier	6 tier	6 tier	6 tier	8 tier	10 tier
Fuel Consumption Diesel option (L/hr)	18	18	18	30	30	51
Fuel Consumption LP option (Nm ³ /h)	7.3	7.3	7.3	9.7	9.7	tbc
Fuel Consumption NG option (Nm ³ /h)	22	22	22	29	29	tbc

CALCINING & DRYING OVENS

Ansac's CX Series Oven has been developed with over two decades of industry experience into a compact, robust and reliable electric oven which can be configured for calcining or drying.

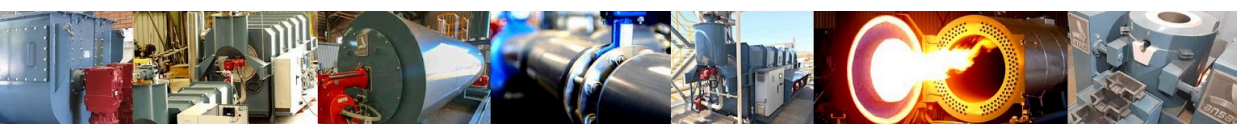
The CX Series Oven design encompasses internal refractory brick side walls and lintels that significantly increase the durability of the Oven whilst decreasing heat losses. Further durability is introduced through the use of secured heating element mountings; by increasing the strength of the elements, Ansac are able to decrease downtime or inefficiencies caused by damaged or broken elements.

Ansac's innovative design approach has led to the implementation of electrical systems within the Oven that provide users with precise temperature control and complete accuracy throughout the drying process. The high level of design and engineering implemented into the CX Series Oven allows for accurate process data to be recorded and detailed evaluation and diagnostics to be carried out.

This fastidious attention to engineering and process detail lead to an Oven that is both robust and efficient with a proven track record of operation in some of the world's harshest environments.



MODEL OVEN	CX500-6	CX500-9	CX800-6	CX800-9
Tray Dimension W X D X H (mm)	500 x 500 x 50	500 x 500 x 50	800 x 800 x 75	800 x 800 x 75
Number of Trays	6	9	6	9
Oven Capacity (L)	75	112.5	288	432
Heat Capacity (kW)	10.5		18.6	
Open Coil Electric Elements	3 banks @ 3.5 kW each		3 banks @ 6.2 kW each	



OPTIONAL ACCESSORIES

In addition to the Gold Room equipment, Stantil can also offer the following accessories as part of the system:

FURNACE REMOTE CONTROL PENDANT - Giving control from up to 6 metres away.

FURNACE FUME HOOD - Built in 316 SS with a swivel to move aside during pouring.

OVEN TRAY TROLLEY - Sized to hold trays outside the oven.

OVEN TRAY LIFTING FRAME - For ease of tray transfer.



CLIENT SUPPORT SERVICES

Stantil is committed to providing ongoing client support through spare parts supply and technical advice. Site visits can be arranged for commissioning support, service activities or installed equipment assessments.



For specific information about the Anzac Gold Room Equipment and how Stantil can be of service to your organisation or project, please contact our Sales Team directly - enquiries@stantil.com.au

Thermal Processing Equipment Specialists | www.stantil.com.au | enquiries@stantil.com.au

